

Classic INSTRUMENTATION

Glass Filled Nylon Cases To Resist Vibration And Corrosion

Scratch Resistant, Water Resistant Glass Lenses

12/24 VDC NG Operation.

For 24 VDC NG applications, a 24 VDC bulb must be purchased separately.

Perimeter Lighting

Consult Factory For Positive Ground Applications

Non-illuminated Pointers



CLASSIC

Classic PYROMETERS

FOR USE WITH TYPE K THERMOCOUPLES

	Diameter	Scale	Sweep	Bezel	Special Features	Part No.
	2 1/16"	0-1200° F 0-650° C	250°	Black		R611
	2 1/16"	0-1500° F	250°	Black		R607G
	2 1/16"	0-1500° F	250°	Black	Pre-turbo Color Coded Dial	R607T
	2 1/16"	0-1500° F	250°	Black	Post-turbo Color Coded Dial	R607 VW
	2 1/16"	300-1500° F 200-800° C	100°	Black		R605
	2 1/16" 52mm	200-800° C	100°	Black		R605C
	2 1/16"	300-1500° F 200-800° C	100°	Chrome		R605P
	2 1/16"	0-1800° F 0-1000° C	250°	Black		R607
	2 1/16" 52mm	0-1000° C	250°	Black		R607C
	2 1/16"	0-1800° F 0-1000° C	250°	Chrome		R607P
	2 1/16"	0-1800° F	250°	Black	Dial says "TURBO TEMP"	R607TT
	2 3/4"	0-1800° F 0-1000° C	100°	Black	3 Hole Screw Mount	R602
	2 3/4"	0-1800° F	100°	Black	3 Hole Screw Mount Color Coded Dial	R602I

CLASSIC

Classic PYROMETERS

FOR USE WITH TYPE K THERMOCOUPLES

Diameter	Scale	Sweep	Bezel	Special Features	Part No.
3"	0-1200° F 0-650° C	250°	Black		R610
3"	0-1800° F 0-1000° C	100°	Black		R604
3" 76mm	0-1000° C	100°	Black		R604C
3"	0-1800° F	100°	Satin Chrome	Color Coded Dial	R604I
3" 76mm	0-1000° C	100°	Black	Color Coded Dial	R604IC
3"	0-1800° F 0-1000° C	100°	Chrome		R604P
3"	0-1800° F 0-1000° C	250°	Black		R606
3" 76mm	0-1000° C	250°	Black		R606C
3"	0-1800° F 0-1000° C	250°	Chrome		R606P



CLASSIC

DIGITAL PYROMETERS (FOR USE WITH TYPE K THERMOCOUPLES)

Diameter	Scale	Bezel	Part No.
2 1/16"	0-2100° F	Black	R630-12/24VDC
2 1/16"	0-2100° F	Chrome	R630P-12/24 VDC

LED display is 0.3". Consult factory for alarm output settings.



Classic THERMOCOUPLES & ACCESSORIES

TYPE K THERMOCOUPLES For High Temperature Applications

Scale	Fittings	Mounting	Probe Length	Plug	Part No.
0-1600°	Brass	1/4" NPT	1.6"	NO	R650S
0-1600°	Brass	1/4" NPT	1.6"	YES	R650SPL
0-1600°	Brass	1/4" NPT	1.6" Adjustable	NO	R658S
0-1600°	Brass	1/4" NPT	1.6" Adjustable	NO	R658S8F
0-1600°	Brass	1/4" NPT	1.6" Adjustable	YES	R658SPL
0-1600°	Brass	1/4" NPT	2.25"	NO	R650
0-1600°	Brass	1/4" NPT	2.25"	YES	R650PL
0-1600°	Brass	1/4" NPT	2.25" Adjustable	NO	R658
0-1600°	Brass	1/4" NPT	2.25" Adjustable	YES	R658PL
0-2000°	Steel	1/8" NPT	1.6" Adjustable	NO	R658SHT8F
0-2000°	Steel	1/8" NPT	1.6" Adjustable	YES	R658SHT8FPL
0-2000°	Steel	1/4" NPT	1.6" Adjustable	NO	R658SHT
0-2000°	Steel	1/4" NPT	1.6" Adjustable	YES	R658SHTPL
0-2000°	Steel	1/4" NPT	1.6"	NO	R650SHT
0-2000°	Steel	1/4" NPT	1.6"	YES	R650SHTPL
0-2000°	Steel	1/4" NPT	2.25"	NO	R650HT
0-2000°	Steel	1/4" NPT	2.25"	YES	R650HTPL
0-2000°	Steel	1/4" NPT	2.25" Adjustable	NO	R658HT
0-2000°	Steel	1/4" NPT	2.25" Adjustable	YES	R658HTPL
0-2000°	Steel	Clamp	2.25" Adjustable	NO	R650AHT
0-2000°	Steel	Clamp	2.25" Adjustable	YES	R650AHTPL

- Thermocouple probe length and installation should place the tip of the thermocouple in the middle of the exhaust flow.
- Thermocouples with steel fittings are used in gasoline and diesel high performance applications.
- Thermocouples with brass fittings are recommended for marine use and all other standard applications.
- 1.6" Adjustable thermocouples are typically used for manifold installations.
- Plug versions recommended for marine or high corrosion environments.
- Non-plug versions have ring terminals for electrical connection.

THERMOCOUPLE ACCESSORIES

Description	Part No.
Weld Bushing (To Weld Onto Exhaust Tube For a 1/4" NPTF Connection To Mount Thermocouple)	R680
Weld Bushing (To Weld Onto Exhaust Tube For a 1/8" NPTF Connection To Mount Thermocouple)	R685
1/8"-27 NPTF Brass Compression Fitting	R681
1/4"-18 NPTF Brass Compression Fitting	R682
1/8"-27 NPTF Steel Compression Fitting For High Temperature Applications	R683
1/4"-18 NPTF Steel Compression Fitting For High Temperature Applications	R684
Fiberglass Sleeves (To Protect Thermocouple Leads From Shorting Each Other)	R7980



Classic THERMOCOUPLES & ACCESSORIES

LEAD WIRES (Numerical Suffix Indicates Length in Feet)

Description	Part No.
6' Lead Wire without Plug in Connector	R660-6
6' Lead Wire with Plug in Connector	R660-6PL
8' Lead Wire without Plug in Connector	R660-8
8' Lead Wire with Plug in Connection	R660-8PL
10' Lead Wire without Plug in Connection	R660-10
10' Lead Wire with Plug in Connection	R660-10PL
14' Lead Wire without Plug in Connection	R660-14
14' Lead Wire with Plug in Connection	R660-14PL
XX' Lead Wire without Plug in Connection*	R660-XX
XX' Lead Wire with Plug in Connection*	R660-XXPL

- Plug versions recommended for marine or high corrosion environments.
- Non-plug versions have ring terminals for electrical connection

* Lead wires above 20' are available in 5' increments.
Lead wires up to 50' are stocked.
Longer lengths available by special order.

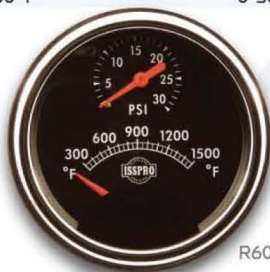
R600 PYROMETER TESTER

Description	Part No.
The R600 is used for testing pyrometers, thermocouples and lead wires.	R600



3" TURBOCATOR Scales to Monitor Exhaust Temperature & Turbo Boost Pressure

Temperature Scale	Boost Range	Bezel	Part No.
300-1500° F	0-30 PSI	Black	R609
300-1500° F	0-30 PSI	Chrome	R609P



R609P

Classic PYROMETERS & ACCESSORIES

LOW TEMPERATURE PYROMETERS For use with Type J Thermocouples



Diameter	Scale	Bezel	Pointer	Part No.
2 1/16"	0-600°	Black	Red	R616
3"	0-600°	Black	Red	R614

TYPE J LOW TEMPERATURE THERMOCOUPLES

Scale	Mounting	Part No.
0-600°	1/4" NPT	R654
0-600°	14 mm Ring	R6514



LOW TEMPERATURE LEAD WIRES

Description	Part No.
Low temperature iron constantan. 3' is standard.	R653-(# of feet)



CLASSIC

Did you know?

ISSPRO began in 1949 as a speedometer repair shop in Portland, Oregon.

We are different from most gauge manufacturers in that we are not part of a global conglomerate.

The family that started the business still owns ISSPRO and is involved in daily operations.

We take pride in our past and control our own future.



Classic MECHANICAL SPEEDOMETERS

Calibrated for Applications Generating 1,000 Cable Revolutions/Mile (Except Metric Versions)

Diameter	Scale	Odometer	Bezel	Pointer	Part No.
3 3/8" 85 mm	0-80 MPH	Yes + Trip	Black	White Tip	R8492
3 3/8" 85 mm	0-80 MPH	Yes + Trip	Chrome	White Tip	R8493
3 3/8" 85 mm	0-80 MPH	Yes	Chrome	White Tip	R8498
3 3/8" 85 mm	0-80 MPH	Yes	Black	White Tip	R8499
3 3/8" 85 mm	0-120 mph	Yes	Chrome	White Tip	R8440
3 3/8" 85 mm	0-120 mph	Yes	Black	White Tip	R8441
3 3/8" 85 mm	0-120 mph	Yes + Trip	Chrome	White Tip	R8494
3 3/8" 85 mm	0-120 mph	Yes + Trip	Black	White Tip	R8495
3 3/8" 85 mm	0-140 KPH	Yes + Trip	Black	White Tip	R8490
85 mm 3 3/8"	0-140 KPH	Yes + Trip	Chrome	White Tip	R8490C
85 mm 3 3/8"	0-140 KPH	Yes	Black	White Tip	R8491
85 mm 3 3/8"	0-140 KPH	Yes	Chrome	White Tip	R8491C
3 3/8" 85 mm	0-80 MPH 0-130 KPH	Yes	Black	Red-Orange Tip	R8496
5" 127 mm	0-80 MPH 0-130 KPH	Yes	Black	White Tip	R8430
5" 127 mm	0-80 MPH	Yes	Black	Red-Orange Tip	R8430R



CLASSIC

Standard SAE Mounting Holes
Standard SAE .104" Square tip and 5/8"-18 Connection.

Includes light kit and mounting hardware.

Classic PROGRAMMABLE SPEEDOMETERS 12/24 VDC

	Diameter	Scale	Odometer	Bezel	Pointer	2 Speed Axle Switching	Part No.
	3 3/8" 85mm	0-30 MPH 0-50 KPH	No	Black	Red-orange Tip	No	R8474
	3 3/8" 85mm	0-30 MPH 0-50 KPH	Yes	Black	Red-orange Tip	No	R8475
	3 3/8" 85mm	0-30 MPH 0-50 KPH	No	Black	Red-orange Tip	No	R8476 (X10 Calibration)
	3 3/8" 85mm	0-30 MPH 0-50 KPH	Yes	Black	Red-orange Tip	No	R8477 (X10 Calibration)
	3 3/8" 85mm	0-50 MPH 0-80 KPH	No	Black	Red-orange Tip	No	R8478
	3 3/8" 85mm	0-50 MPH 0-80 KPH	Yes	Black	Red-orange Tip	No	R8479
	3 3/8" 85mm	0-80 MPH 0-130 KPH	Yes	Black	Red-orange Tip	No	R8460
	3 3/8" 85mm	0-80 MPH 0-130 KPH	Yes	Black	Red-orange Tip	Yes	R8460M
	3 3/8" 85mm	0-80 MPH 0-130 KPH	Yes Settable	Black	Red-orange Tip	Yes	R8460M-SET
	3 3/8" 85mm	0-80 MPH 0-130 KPH	Yes	Chrome	Red-orange Tip	Yes	R8460MC
	3 3/8" 85mm	0-120 MPH 0-180 KPH	Yes	Black	Red-orange Tip	No	R8481
	3 3/8" 85mm	0-170 MPH 0-274 KPH	Yes	Chrome	White Tip	No	R8470
	3 3/8" 85mm	0-170 MPH 0-274 KPH	Yes	Black	White Tip	No	R8471
	3 3/8" 85mm	0-80 MPH	No	Black	White Tip	No	R8450
	3 3/8" 85mm	0-80 MPH	No	Black	White Tip	Yes	R8450M
	3 3/8" 85mm	0-80 MPH	Yes	Black	White Tip	No	R8480
	3 3/8" 85mm	0-80 MPH	Yes Settable	Black	White Tip	No	R8480-SET

CLASSIC

*For 24 VDC NG applications, a 24 VDC bulb must be purchased separately.

12/24 VDC *Classic* PROGRAMMABLE SPEEDOMETERS

Diameter	Scale	Odometer	Bezel	Pointer	2 Speed Axle Switching	Part No.
3 3/8" 85mm	0-80 MPH	Yes	Chrome	White Tip	No	R8480C
3 3/8" 85mm	0-80 MPH	Yes Settable	Chrome	White Tip	No	R8480C-SET
3 3/8" 85mm	0-80 MPH	Yes	Black	White Tip	Yes	R8480M
3 3/8" 85mm	0-80 MPH	Yes Settable	Black	White Tip	Yes	R8480M-SET
3 3/8" 85mm	0-80 MPH	Yes	Chrome	White Tip	Yes	R8480MC
3 3/8" 85mm	0-80 MPH	Yes Settable	Chrome	White Tip	Yes	R8480MC-SET
3 3/8" 85mm	0-120 mph	Yes	Black	White Tip	No	R8482
3 3/8" 85mm	0-120 MPH	Yes	Chrome	White Tip	No	R8482C
3 3/8" 85mm	0-140 KPH	Yes	Black	White Tip	No	R8401
3 3/8" 85mm	0-140 KPH	Yes	Black	White Tip	Yes	R8401M
4 5/8" 118mm	0-85 MPH 0-140 KPH	Yes	Black	Red-orange Tip	Yes	R8416M
4 5/8" 118mm	0-140 KPH (in Kms)	Yes	Black	Red-orange Tip	Yes	R8418M
5" 127mm	0-80 MPH	Yes	Black	White Tip	Yes	R8410M
5" 127mm	0-80 MPH	Yes	Black	Red-orange Tip	Yes	R8410MR
5" 127mm	0-80 MPH 0-130 KPH	Yes	Black	Red-orange Tip	Yes	R8412M



CLASSIC

*For 24 VDC NG applications, a 24 VDC bulb must be purchased separately.

Classic MECHANICAL TACHOMETERS

Includes light kit and mounting hardware.



CLASSIC

Diameter	Scale	Hourmeter	Bezel	Pointer	Ratio	Part No.
3 3/8" 85 mm	0-2500 rpm	Yes	Chrome	White Tip	1:1	RTH88
3 3/8" 85 mm	0-2500 rpm	Yes	Chrome	White Tip	1:1 CCW	RTH89
3 3/8" 85 mm	0-2500 rpm	Yes	Chrome	White Tip	.5:1	RTH91
3 3/8" 85 mm	0-2500 rpm	Yes	Chrome	White Tip	.5-1 CCW	RTH92
3 3/8" 85 mm	0-3500 rpm	No	Black	White Tip	.5:1	R8597
3 3/8" 85 mm	0-3500 rpm	No	Chrome	White Tip	.5:1	R8597-001
3 3/8" 85 mm	0-3500 rpm	Yes	Chrome	White Tip	.5:1	R8598
3 3/8" 85 mm	0-3500 rpm	No	Chrome	White Tip	1:1	R85981
3 3/8" 85 mm	0-3500 rpm	Yes	Chrome	White Tip	1:1	R85985
3 3/8" 85 mm	0-3500 rpm	Yes	Black	White Tip	.5:1	R8599
3 3/8" 85 mm	0-3500 rpm	No	Black	White Tip	1:1	R85991
3 3/8" 85 mm	0-3500 rpm	Yes	Black	White Tip	1:1	R85995
3 3/8" 85 mm	0-5000 rpm	No	Black	White Tip	.5:1	R8596
3 3/8" 85 mm	0-5000 rpm	No	Chrome	White Tip	.5:1	R8596-001
5" (127 mm)	0-3000 rpm	No	Black	White Tip	.5:1	R8550
5" (127 mm)	0-3000 rpm	No	Black	Red-Orange Tip	.5:1	R8550R
5" (127 mm)	0-3000 rpm	Yes	Black	White Tip	.5:1	R8550S
5" (127 mm)	0-3000 rpm	Yes	Black	Red-Orange Tip	.5:1	R8550SR
5" (127 mm)	0-5000 rpm	No	Black	White Tip	.5:1	R8556
5" (127 mm)	0-5000 rpm	No	Chrome	White Tip	.5:1	R8556-001

2 1/16" 12 VDC NG

Application	Scale	Tach Part No.	Sensor Kit Part No.*
Universal 3K	0-3000 RPM	R8501	R8906
Dodge/Cummins Pre '92 1991 and earlier, no computer	0-3000 RPM	R8501	R8912
Dodge/Cummins Post '92 1991 1/2 Forward with computer	0-3000 RPM	R8501	R8912-92 (Harness)
GM 6.2/6.5 Liter	0-4000 RPM	R8503	R8900
Ford 6.9/7.3 Liter	0-4000 RPM	R8503	R8901
Universal 4K	0-4000 RPM	R8503	R8906
Universal 5K	0-5000 RPM	R8504	R8906
Universal 6K	0-6000 RPM	R8591	R8906
Magnet Kit with Epoxy Sensors Only			R8911 Add "S0" to Sensor Kit Part No.

Sensor Kits must be ordered separately.
Kits include sensor, magnets, and epoxy needed for a typical installation.
The sensor is mounted to an oil pan bolt and the magnets are mounted to the front engine pulley.

DIGITAL HAND-HELD LCD TACHOMETER W/MEMORY

Description	Scale	Accuracy	Part No.
Digital Hand-held Tach	6 to 100,000 RPM	+/- .1 RPM for 5 to 999.9 RPM	R1620D

The Digital Hand-held Tach uses a laser beam to measure rotational speeds without mechanical contact on any rotating object. Includes Carrying Case, Batteries & Reflective Tape.

Additional Reflective Tape (2 ft)	R1620-TAPE
-----------------------------------	------------

PULSE DISTRIBUTION MODULE

Description	Part No.
This module solves problems caused by attaching multiple instruments to one magnetic speed sender or pulse generator. It accepts your existing speedometer or tachometer signal and will boost and isolate it into five separate outputs. These can be used to drive speedometers, on-board computers, cruise control, taximeters and other devices that use the signal without weak or intermittent signals and interference.	R4605 12-24 VDC



Classic ALTERNATOR & IGNITION TACHOMETERS

2-1/16" Ignition Tachs (12 VDC NG) For 4, 6, or 8 cylinder, 4 stroke engines with coil type ignition or tach output connection



Scale	Hourmeter	Bezel	Pointer	Part No.
0-4000 RPM	No	Black	Red-orange	R8508
0-5000 RPM	No	Black	Red-orange	R8509
0-6000 RPM	No	Black	Red-orange	R8510

3-3/8" Air Core Ignition Tachs (12/24 VDC NG) For 4, 6, or 8 cylinder, 4 stroke engines with coil type ignition or tach output connection



Scale	Hourmeter	Bezel	Pointer	Part No.
0-3000 RPM	No	Black	White	R85070
0-3000 RPM	Yes	Black	White	R85075
0-4000 RPM	No	Black	White	R85080
0-4000 RPM	Yes	Black	White	R85085
0-5000 RPM	No	Black	White	R85090
0-5000 RPM	Yes	Black	White	R85095
0-6000 RPM	No	Black	White	R85100
0-6000 RPM	Yes	Black	White	R85105
0-8000 RPM	No	Black	White	R85110
0-8000 RPM	Yes	Black	White	R85115

3-3/8" Alternator Tachs (12/24 VDC NG) These tachometers are designed for alternator applications with an AC tap and are field calibratable. Will not work on DC.



Scale	Hourmeter	Pointer	Part No.
0-2000 RPM	No	White Tip	R85200
0-2000 RPM	Yes	White Tip	R85205
0-3000 RPM	No	White Tip	R85210
0-3000 RPM	Yes	White Tip	R85215
0-4000 RPM	No	White Tip	R85220
0-4000 RPM	No	Red-Orange Tip	R85220R
0-4000 RPM	Yes	White Tip	R85225
0-6000 RPM	No	White Tip	R85230
0-6000 RPM	Yes	White Tip	R85235
0-8000 RPM	No	White Tip	R85240
0-8000 RPM	Yes	White Tip	R85245

*For 24 VDC NG applications, a 24 VDC bulb must be purchased separately.

Classic PROGRAMMABLE TACHOMETERS

Our programmable tachometers accept signals from pulse generators, magnetic senders, or AC taps

Diameter	Scale	Hourmeter	Bezel	Pointer	Part No.
3 3/8" (85 mm)	0-1000 RPM	No	Black	White Tip	R8580M
3 3/8" (85 mm)	0-1000 RPM	Yes	Black	White Tip	R85805M
3 3/8" (85 mm)	0-1500 RPM	No	Black	White Tip	R8581M
3 3/8" (85 mm)	0-1500 RPM	Yes	Black	White Tip	R85815M
3 3/8" (85 mm)	0-2000 rpm	No	Black	White Tip	R8529M
3 3/8" (85 mm)	0-2000 rpm	Yes	Black	White Tip	R85295M
3 3/8" (85 mm)	0-3000 RPM	No	Black	White Tip	R8530M
3 3/8" (85 mm)	0-3000 RPM	Yes	Black	White Tip	R85305M
3 3/8" (85 mm)	0-3000 RPM	Yes	Black	White Tip	R85305M-SET
3 3/8" (85 mm)	0-3000 RPM	Yes	Chrome	White Tip	R85305MC
3 3/8" (85 mm)	0-3000 RPM	No	Black	Red-Orange Tip	R8531M
3 3/8" (85 mm)	0-3000 RPM	Yes	Black	Red-Orange Tip	R85315M
3 3/8" (85 mm)	0-4000 RPM	No	Black	White Tip	R8585M
3 3/8" (85 mm)	0-4000 RPM	Yes	Black	White Tip	R85855M
3 3/8" (85 mm)	0-5000 RPM	No	Black	White Tip	R8586M
3 3/8" (85 mm)	0-5000 RPM	Yes	Black	White Tip	R85865M
3 3/8" (85 mm)	0-6000 RPM	No	Black	White Tip	R8584M
3 3/8" (85 mm)	0-6000 RPM	Yes	Black	White Tip	R85845M
3-3/8" (85 mm)	0-8000 RPM	No	Black	White Tip	R8588M
4 5/8" (118 mm)	0-3500 RPM	No	Black	Red-Orange Tip	R85600M
5" (127 mm)	0-3000 RPM	No	Black	White Tip	R8540M
5" (127 mm)	0-3000 RPM	No	Black	Red-Orange Tip	R8540MR



CLASSIC

For 24VDC NG applications, a 24 VDC bulb must be purchased separately.

MAGNETIC SENSORS

Overall Length	Adjustable Thread Length	Connection	Mounting Threads	Part No.
2.6"	2.00"	Wire Leads	3/4"-16	R8930
2.6"	2.00"	Plug w/mating connector	3/4"-16	R8938
3"	2.00"	Terminals	3/4"-16	R8935
3.1"	2.37"	Wire Leads	3/4"-16	R8932
3.5"	2.37"	Terminals	3/4"-16	R8937
4"	3.50"	Wire Leads	5/8"-18	R8933
4.4"	3.75"	Wire Leads	3/4"-16	R8931
4.8"	3.75"	Terminals	3/4"-16	R8936
4"	2.00"	Wire Leads Dual Output	3/4"-16	R8939

SIGNAL GENERATORS (30 PULSES/REV)

Thread Size	Connection	Part No.
Sender • 7/8"-18 • generator	1 male drive tip required	R8970
Sender • 7/8"-18 • feed through	1 male & 1 female drive tip required	R8941

DRIVE TIPS FOR SIGNAL GENERATORS - MALE

Description	Part No.
.152" Tang (fits drill size 5/32")	R8971
.187" Tang (fits drill size 3/16")	R8972
.203" Tang (fits drill size 13/64")	R8973
.104" Square	R8974
.150" Square	R8979

DRIVE TIPS FOR SIGNAL GENERATORS - FEMALE

Description	Part No.
.203" Tang Hole	R8975
.104" Square Hole	R8976
.152" Tang Hole	R8977
.187" Tang Hole	R8978

INTERCONNECT HARNESES

For Installation of ISSPRO Speedometers and Tachometers in older OEM Applications

OEM Part No.	ISSPRO Replacement Gauge	ISSPRO Replacement Harness
Peterbilt 17-03551-001	R8450	R7032
Peterbilt 17-03551-002	R8480	R7032
Peterbilt 17-03552-001	R8530M	R7032
Peterbilt 17-03552-002	R85305M	R7032
Peterbilt 17-03190	R8480	R7034
Peterbilt 17-03183	R8530M	R7034
Navistar 1682070C91	R8416M or R8418M	R7036
Navistar 1682071C91	R85600M	R7036
Kenworth K152-473-1	R8540M	R7038
Kenworth K152-471-1	R8412M	R7040

AIR PRESSURE

Scale	Bezel	Pointer	Part No.	Pressure Tubing Kit*	Length
10-150 PSI	Black	White Tip	R8605	R7110	6'
				R7110-10	10'
				R7172	16'
10-150 PSI	Chrome	White Tip	R8705	R7110	6'
				R7110-10	10'
				R7172	16'
10-150 PSI 70-1035 kPa	Black	Red Orange Tip	R9005	R7110	6'
				R7110-10	10'
				R7172	16'
10-150 PSI 70-1035 kPa	Chrome	Red Orange Tip	R9705	R7110	6'
				R7110-10	10'
				R7172	16'



DUAL AIR PRESSURE

Scale	Bezel	Pointer	Part No.	Pressure Tubing Kit*	Length
0-150 PSI	Black	Top Pointer White	R8606	R7110	6'
		Bottom Pointer Red Orange		R7110-10	10'
				R7172	16'
0-150 PSI	Chrome	Top Pointer White	R8706	R7110	6'
		Bottom Pointer Red Orange		R7110-10	10'
				R7172	16'
0-150 PSI 0-1050 kPa	Black	Top Pointer White	R9006	R7110	6'
		Bottom Pointer Red Orange		R7110-10	10'
				R7172	16'



AIR CLEANER RESTRICTION Not Lighted

Scale	Bezel	Pointer	Part No.	Pressure Tubing Kit*	Length
0-40 in.H2O	Black	Red Orange	R8670R	R7110	6'
				R7110-10	10'
				R7172	16'
0-40 in.H2O	Chrome	Red Orange	R8770R	R7110	6'
				R7110-10	10'
				R7172	16'



AXLE LOAD Not Lighted

Scale	Bezel	Pointer	Part No.	Pressure Tubing Kit*	Length
5k-55k lbs	Chrome	Red Orange	R8820	R7110	6'
				R7110-10	10'
				R7172	16'
7.5k-45k lbs	Chrome	Red Orange	R8821	R7110	6'
				R7110-10	10'
				R7172	16'



*Pressure Tubing Kits Sold Separately

Contact factory for custom length tubing kits.

DRIVE OIL PRESSURE

Scale	Bezel	Pointer	Part No.	Pressure Tubing Kit* (braided stainless steel)	Length
20-300 PSI	Chrome	White Tip	R8717	R78824-3	3'
				R78824-6	6'
				R78824-8	8'
25-400 PSI	Black	White Tip	R8608	R78824-3	3'
				R78824-6	6'
				R78824-8	8'
25-400 PSI	Chrome	White Tip	R8708	R78824-3	3'
				R78824-6	6'
				R78824-8	8'
25-400 PSI 170-3000 kPa	Black	Red Orange Tip	R9008	R78824-3	3'
				R78824-6	6'
				R78824-8	8'
25-400 PSI 170-3000 kPa	Chrome	Red Orange Tip	R9708	R78824-3	3'
				R78824-6	6'
				R78824-8	8'

FUEL PRESSURE Isolator/snubber recommended

Scale	Bezel	Pointer	Part No.	Pressure Tubing
5-100 PSI	Black	White Tip	R8607	Recommend 3/16" braided stainless steel hose (See page 14)
5-100 PSI	Chrome	White Tip	R8707	Recommend 3/16" braided stainless steel hose (See page 14)
2-30 PSI	Chrome	White Tip	R8709	Recommend 3/16" braided stainless steel hose (See page 14)
10-200 PSI	Chrome	White Tip	R8714	Recommend 3/16" braided stainless steel hose (See page 14)

MANIFOLD PRESSURE

Scale	Bezel	Pointer	Part No.	Pressure Tubing Kit*	Length
1-15 PSI	Black	White Tip	R8611	R7110	6'
				R7110-10	10'
				R7172	16'
1-15 PSI	Black	Red Orange Tip	R8611R	R7110	6'
				R7110-10	10'
				R7172	16'
1-15 PSI	Chrome	White Tip	R8711	R7110	6'
				R7110-10	10'
				R7172	16'
2-30 PSI	Black	White Tip	R8610	R7110	6'
				R7110-10	10'
				R7172	16'
2-30 PSI	Chrome	White Tip	R8710	R7110	6'
				R7110-10	10'
				R7172	16'

Classic MECHANICAL PRESSURE & VACUUM GAUGES 2 1/16"

OIL PRESSURE

Scale	Bezel	Pointer	Part No.	Pressure Tubing Kit	Length
2-50 PSI	Black	White Tip	R8602	R7110	6'
				R7110-10	10'
				R7172	16'
2-50 PSI	Chrome	White Tip	R8702	R7110	6'
				R7110-10	10'
				R7172	16'
2-50 PSI 35-345 kPa	Black	Red Orange Tip	R9002	R7110	6'
				R7110-10	10'
				R7172	16'
5-80 PSI	Black	White Tip	R8600	R7110	6'
				R7110-10	10'
				R7172	16'
5-80 PSI	Chrome	White Tip	R8700	R7110	6'
				R7110-10	10'
				R7172	16'
5-80 PSI 35-345 kPa	Black	Red Orange Tip	R9000	R7110	6'
				R7110-10	10'
				R7172	16'
5-100 PSI	Black	White Tip	R8601	R7110	6'
				R7110-10	10'
				R7172	16'
5-100 PSI	Chrome	White Tip	R8701	R7110	6'
				R7110-10	10'
				R7172	16'
5-100 PSI 35-700 kPa	Black	Red Orange Tip	R9001	R7110	6'
				R7110-10	10'
				R7172	16'
5-100 PSI 35-700 kPa	Chrome	Red Orange Tip	R9701	R7110	6'
				R7110-10	10'
				R7172	16'
10-200 PSI	Chrome	White Tip	R8712	Braided stainless steel hose is recommended (see page 14)	

TURBO PRESSURE

Scale	Bezel	Pointer	Part No.	Pressure Tubing Kit	Length
2-50 PSI	Black	White Tip	R8603	R7110	6'
				R7110-10	10'
				R7172	16'
2-50 PSI	Black	Red Orange Tip	R8603R	R7110	6'
				R7110-10	10'
				R7172	16'
2-50 PSI	Chrome	White Tip	R8703	R7110	6'
				R7110-10	10'
				R7172	16'

VACUUM/TURBO BOOST

Scale	Bezel	Pointer	Part No.	Pressure Tubing Kit	Length
0-30 in Hg 0-15PSI	Black	White Tip	R8870	R7110	6'
				R7110-10	10'
				R7172	16'
0-30 in Hg 0-15PSI	Chrome	White Tip	R8871	R7110	6'
				R7110-10	10'
				R7172	16'



CLASSIC

Contact factory for custom length tubing kits.

Classic MECHANICAL 2 1/16" VACUUM GAUGES

VACUUM



Scale	Bezel	Pointer	Part No.	Vacuum Tubing Kit (Included with gauge)
2-30 in Hg	Black	White Tip	R8675	R7111
2-30 in Hg	Black	Red Orange Tip	R8675R	R7111
2-30 in Hg	Chrome	White Tip	R8775	R7111
2-30 in Hg 50-760 mm Hg	Black	Red Orange Tip	R9075	R7111
2-30 in Hg 50-760 mm Hg	Chrome	Red Orange Tip	R9775	R7111

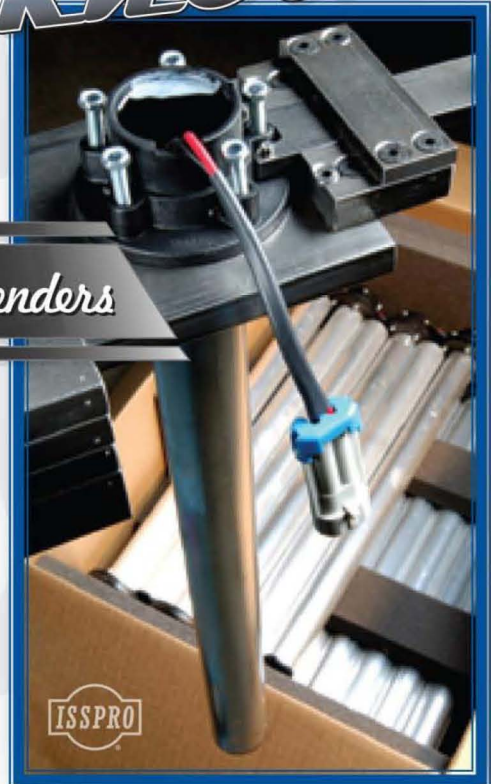
Did you know?

ISSPRO

We're Famous for Fuel Level Senders

Our Ultimate Fuel Level Sender is the most reliable and accurate fuel level sender on the market today.

It is the fuel level sender of choice for many major OEM's as well as the United States military.



CLASSIC

Classic MECHANICAL 2 1/16" TEMPERATURE GAUGES

OIL TEMPERATURE

Scale	Bezel	Pointer	Capillary	Part No.
140-325° F	Black	White Tip	72" (6')	R8635
140-325° F	Chrome	White Tip	72" (6')	R8735
140-325° F	Black	White Tip	144" (12')	R8636
140-325° F	Chrome	White Tip	144" (12')	R8736
140-325° F 60-160° C	Black	Red Orange Tip	144" (12')	R9036
140-325° F 60-160° C	Chrome	Red Orange Tip	144" (12')	R9736



WATER TEMPERATURE

Scale	Bezel	Pointer	Capillary	Part No.
100-265° F	Black	White Tip	48" (4')	R8634
100-265° F	Chrome	White Tip	48" (4')	R8734
100-265° F 40-130° C	Black	Red Orange	48" (4')	R9034
100-265° F 40-130° C	Chrome	Red Orange	48" (4')	R9734
100-265° F	Black	White Tip	60" (5')	R8642
100-265° F	Chrome	White Tip	60" (5')	R8742
100-265° F 40-130° C	Black	Red Orange Tip	60" (5')	R9042
100-265° F 40-130° C	Chrome	Red Orange Tip	60" (5')	R9742
100-265° F	Black	White Tip	72" (6')	R8630
100-265° F	Chrome	White Tip	72" (6')	R8730
100-265° F 40-130° C	Black	Red Orange Tip	72" (6')	R9030
100-265° F 40-130° C	Chrome	Red Orange	72" (6')	R9730
100-265° F	Black	White Tip	96" (8')	R8632
100-265° F	Chrome	White Tip	96" (8')	R8732



Gauge is supplied with adapter nut to adapt capillary tube to male thread size 1/2" NPTF (R7850). To adapt to 3/8" NPTF, order R7851. To adapt to 1/4" NPTF, order R7852.

Classic MECHANICAL 2 1/16" TEMPERATURE GAUGES

WATER TEMPERATURE

Scale	Bezel	Pointer	Capillary	Part No.
100-265°F (40-130°C)	Black	Red Orange Tip	96" (8')	R9032
100-265°F (40-130°C)	Chrome	Red Orange Tip	96" (8')	R9732
100-265°F	Black	White Tip	120" (10')	R8633
100-265°F	Chrome	White Tip	120" (10')	R8733
100-265°F (40-130°C)	Black	Red Orange Tip	120" (10')	R9033
100-265°F (40-130°C)	Chrome	Red Orange Tip	120" (10')	R9733
100-265°F	Black	White Tip	144" (12')	R8631
100-265°F	Chrome	White Tip	144" (12')	R8731
100-265°F (40-130°C)	Black	Red Orange Tip	144" (12')	R9031
100-265°F (40-130°C)	Chrome	Red Orange Tip	144" (12')	R9731
100-265°F	Chrome	White Tip	216" (18')	R8737
100-265°F (40-130°C)	Black	Red Orange Tip	216" (18')	R9037
100-265°F	Chrome	White Tip	288" (24')	R8738
100-265°F	Chrome	White Tip	360" (30')	R8739

Gauge is supplied with adapter nut to adapt capillary tube to male thread size 1/2" NPTF (R7850). To adapt to 3/8" NPTF, order R7851. To adapt to 1/4" NPTF, order R7852.

CLASSIC

Classic MECHANICAL 3 GAUGE PANELS



OIL PRESSURE & WATER TEMPERATURE & VOLTMETER

Oil Pressure Gauge	Color Coded Voltmeter	Water Temp Gauge	Bezels	Pointers	Part No.
5-80 PSI Scale	12 VDC 10-16 VDC Scale	100-265° F 72" Capillary	Black	White Tip	R8680
5-80 PSI Scale	12 VDC 10-16 VDC Scale	100-265° F 72" Capillary	Chrome	White Tip	R8780

Mounting bracket and six foot tubing kit included with panels.

AIR PRESSURE

Scale	Bezel	Pointer	Part No.	Sender Type Code
0-150 PSI	Black	White Tip	R8623	PD - Page 36
0-150 PSI	Chrome	White Tip	R8723	PD - Page 36



FUEL PRESSURE

Scale	Bezel	Pointer	Part No.	Sender
0-100 PSI	Black	White Tip	R8624	Not Available
0-100 PSI	Chrome	White Tip	R8724	Not Available



OIL PRESSURE

Scale	Bezel	Pointer	Part No.	Sender Type Code
0-80 PSI	Black	White Tip	R8620	PA - Page 36
0-80 PSI	Chrome	White Tip	R8720	PA - Page 36
0-80 PSI 0-5 Bar	Black	Red Orange Tip	R9120	PF - Page 36 (Compatible with VDO senders)
0-80 PSI 0-5 Bar	Black	Red Orange Tip	R9120-24VDC	PF - Page 36 (Compatible with VDO senders)
0-80 PSI 0-550 kPa	Black	Red Orange Tip	R9020	PA - Page 36
0-80 PSI	Chrome	Red Orange Tip	R9720	PA - Page 36
0-100 PSI	Black	White Tip	R8621	PB - Page 36
0-100 PSI	Chrome	White Tip	R8721	PB - Page 36
0-100 PSI 0-700 kPa	Black	Red Orange Tip	R9021	PB - Page 36
0-100 PSI 0-700 kPa	Black	Red Orange Tip	R9021-24VDC	PB - Page 36
0-100 PSI 0-700 kPa	Chrome	Red Orange Tip	R9721	PB - Page 36
0-150 PSI 0-1030 kPa	Black	Red-Orange Tip	R9029	PD - Page 36
0-150 PSI 0-1030 kPa	Chrome	Red Orange Tip	R9729	PD - Page 36
0-150 PSI 0-10 Bar	Black	Red Orange Tip	R9123	PG - Page 36 (Compatible with VDO senders)
0-150 PSI 0-10 Bar	Chrome	Red Orange Tip	R9123-24VDC	PG - Page 36 (Compatible with VDO senders)



Classic ELECTRICAL 2 1/16" PRESSURE GAUGES

TRANSMISSION OIL PRESSURE



Voltage	Scale	Bezel	Pointer	Part No.	Sender Type Code
12V	0-350 PSI	Black	White Tip	R8125	PH (below) (Compatible with VDO senders)
24 V	0-350 PSI	Black	White Tip	R8125 24 VDC	PH(below) (Compatible with VDO senders)
12V	0-350 PSI 0-25 Bar	Black	Red Orange Tip	R9125	PH (below) (Compatible with VDO senders)
24 V	0-350 PSI 0-25 Bar	Black	Red Orange Tip	R9125 24 VDC	PH(below) (Compatible with VDO senders)

Classic 1/8" PRESSURE SENDERS FOR OIL & AIR APPLICATIONS



Scale	Type Code	Terminals	Part No.
0-80 PSI	PA	1 Stud	R8916
0-80 PSI	PA	2 Stud Dual Station	R8916-02
0-80 PSI	PA	2 Stud Isolated ground	R8916-03
0-100 PSI	PB	1 Stud	R8917
0-100 PSI	PB	2 Stud Dual Station	R8917-02
0-100 PSI	PB	2 Stud Isolated ground	R8917-03
0-150 PSI	PD	1 Stud	R8919
0-150 PSI	PD	2 Stud Isolated ground	R8919-03
0-80 PSI/5 Bar	PF	1 Stud	R89805 VDO compatible
0-150 PSI/10 Bar	PG	1 Stud	R89810 VDO compatible
0-350 PSI/25 Bar	PH	2 Stud Isolated ground	R89825 VDO compatible

Senders are 1/8" NPTF.

Unless otherwise noted, these senders are grounded through body.

These units are not for use in fuel pressure applications.

To order metric adapter fitting kit, specify P/N R7969.

Kit includes M10 x 1.0, M12 x 1.5, M16 x 1.5 and M18 x 1.5 to 1/8" NPTF adapters.

M14 x 1.25 to 1/8" NPTF adapter is available separately as P/N R7966.

Classic PRESSURE SENSOR ACCESSORIES

Boost Bolt 5.9L & 6.7L Dodge (M8 x 1.25)

Part No.

Replaces factory intake manifold bolt so boost gauge can be installed without drilling/tapping. Has tapped 1/8" NPT port.

R7741



BANJO BOLT '94-'07 DODGE

Part No.

For Dodge fuel pressure measurement on stock fuel supply lines.

R7743



Metric Adapter Fitting

Part No.

M14 x 1.25 to 1/8" NPTF adapter. Not included in kit.

R7966



Metric Adapter Fitting Kit

Part No.

M10 x 1.0 • M12 x 1.5 • M14 x 1.5 • M16 x 1.5 • M18 x 1.5
to 1/8" NPTF adapters.

R7969



M12 x 1.5 Male X 1/8" NPT FEMALE ADAPTER

Part No.

For fuel pressure measurement on a 6.0 L Powerstroke engine.

R7962



ORIFICE BASED SNUBBER

Part No.

Restricts flow to dampen pulsations.

R7800



PISTON BASED SNUBBER

Part No.

Restricts flow to dampen pulsations.
Comes with 3 pistons for different rates of damping.

R7798



NEEDLE VALVE

Part No.

Acts as an adjustable snubber, to dampen pulsations.

R7742



CLASSIC

Classic ELECTRICAL 2 1/16" TEMPERATURE GAUGES

OIL TEMPERATURE

	Scale	Bezel	Pointer	Part No.	Sender Type Code
	120-300° F 50-150° C	Black	Red-orange Tip	R9154	TG (Page 40) (Compatible with VDO Senders)
	120-300° F 50-150° C	Black	Red-orange Tip	R9154-24 VDC	TG (Page 40) (Compatible with VDO Senders)
	140-320° F	Black	White Tip	R8654	TB (Page 40)
	140-320° F	Black	Red-orange Tip	R8654R	TB (Page 40)
	140-320° F	Chrome	White Tip	R8754	TB (Page 40)
	140-320° F 60-160° C	Black	Red-orange Tip	R9054	TB (Page 40)
	140-320° F 60-160° C	Black	Red-orange Tip	R9054-24 VDC	TB (Page 40)
	140-320° F 60-160° C	Chrome	Red-orange Tip	R9754	TB (Page 40)

TEMPERATURE

	Scale	Bezel	Pointer	Part No.	Sender Type Code
	100-280° F	Black	White Tip	R8658	TD (Page 40)
	100-280° F	Chrome	White Tip	R8758	TD (Page 40)
	100-280° F 40-140° C	Black	Red-orange Tip	R9058	TD (Page 40)
	100-280° F 40-140° C	Black	Red-orange Tip	R9058-24VDC	TD (Page 40)
	100-280° F 40-140° C	Chrome	Red-orange Tip	R9758	TD (Page 40)

CLASSIC

Classic ELECTRICAL 2 1/16" TEMPERATURE GAUGES

TRANSMISSION OIL TEMPERATURE

Scale	Bezel	Pointer	Part No.	Sender Type Code
140-320°F	Black	Red-orange Tip	R8655R	TB (Page 40)
140-320°F 60-160°C	Black	Red-orange Tip	R9055	TB (Page 40)
140-320°F 60-160°C	Chrome	Red-orange Tip	R9755	TB (Page 40)
140-320°F 60-160°C	Black	Red-orange Tip	R9055-24 VDC	TB (Page 40)



WATER TEMPERATURE

Scale	Bezel	Pointer	Part No.	Sender Type Code
100-240°F	Black	White Tip	R8650	TA (Page 40)
100-240°F	Chrome	White Tip	R8750	TA (Page 40)
100-240°F 40-115°C	Black	Red-orange Tip	R9050	TA (Page 40)
100-240°F 40-115°C	Black	Red-orange Tip	R9050-24VDC	TA (Page 40)
100-250°F 40-120°C	Black	Red-orange Tip	R9150	TF (Page 40) Compatible with VDO Senders.
100-250°F 40-120°C	Black	Red-orange Tip	R9150-24VDC	TF (Page 40) Compatible with VDO Senders.
100-240°F 40-115°C	Chrome	Red-orange Tip	R9750	TA (Page 40)



CLASSIC

Classic TEMPERATURE SENDERS

Scale	Type	Thread	Terminals	Part No.
100-240° F	TA	1/2" NPTF	1 Stud	R8920
100-240° F	TA	1/2" NPTF	2 Blades Isolated ground	R8920-03
100-240° F	TA	3/8" NPTF	1 Stud	R8921
100-240° F	TA	1/4" NPTF	1 Stud	R8922
100-240° F	TA	1/8" NPTF	1 Stud	R8923
100-240° F	TA	1/8" NPTF	2 Blades Isolated ground	R8923-03
100-240° F	TA	M14 X 1.5	1 Stud	R8953
100-240° F	TA	M16 X 1.5	1 Stud	R8954
100-240° F	TA	M18 X 1.5	1 Stud	R8955
140-320° F	TB	M14 X 1.5	1 Stud	R8956
140-320° F	TB	M16 X 1.5	1 Stud	R8957
140-320° F	TB	M18 X 1.5	1 Stud	R8958
140-320° F	TB	1/8" NPTF	1 Stud	R8959
140-320° F	TB	1/8" NPTF	2 Blades Isolated ground	R8959-03
140-320° F	TB	1/4" NPTF	1 Stud	R8960
140-320° F	TB	3/8" NPTF	1 Stud	R8961
140-320° F	TB	1/2" NPTF	1 Stud	R8962
140-320° F	TB	1/2" x 20 UNF	1 Stud	R8963
250° F/120° C	TF	1/2" NPTF	1 Stud	R89850*
300° F/150° C	TG	1/2" NPTF	1 Stud	R89870*
100-280° F	TD	1/8" NPTF	1 Stud	R8992**
100-240° F	TA	1/8" NPTF	1 Stud	R8993**
140-320° F	TB	1/8" NPTF	1 Stud	R8995**

CLASSIC

* Compatible with VDO Gauges.

**Temperature sender kit which includes 1/4", 3/8" and 1/2" adapter bushings.

Classic 2 1/16" AMMETERS

INTERNALLY SHUNTED

Scale	Bezel	Pointer	Part No.
30-0-30 Amps	Black	White Tip	R8668
30-0-30 Amps	Chrome	White Tip	R8768
30-0-30 Amps	Black	Red -Orange Tip	R9068
30-0-30 Amps	Chrome	Red -Orange Tip	R9768
40-0-40 Amps	Black	White Tip	R8665
40-0-40 Amps	Chrome	White Tip	R8765
60-0-60 Amps	Black	White Tip	R8666
60-0-60 Amps	Chrome	White Tip	R8766
60-0-60 Amps	Black	Red -Orange Tip	R9066
60-0-60 Amps	Chrome	Red -Orange Tip	R9766
100-0-100 Amps	Black	White Tip	R8667
100-0-100 Amps	Chrome	White Tip	R8767
100-0-100 Amps	Black	Red -Orange Tip	R9067
100-0-100 Amps	Chrome	Red -Orange Tip	R9767



CLASSIC

Classic ^{2 1/16"} COLOR CODED VOLTMETERS

VOLTMETERS

	Scale	Bezel	Pointer	Part No.
	12VDC/10-16 VDC	Black	White Tip	R8660
	12VDC/10-16 VDC	Chrome	White Tip	R8760
	12 VDC/10-16 VDC	Black	Red -orange Tip	R9060
	12 VDC/10-16 VDC	Chrome	Red -orange Tip	R9760
	24 VDC/20-32 VDC	Black	White Tip	R8661
	24 VDC/20-32 VDC	Chrome	White Tip	R8761
	24 VDC/20-32 VDC	Black	Red -orange Tip	R9061
	24 VDC/20-32 VDC	Chrome	Red -orange Tip	R9761
	32 VDC/26-42 VDC	Black	White Tip	R8662*
	32 VDC/26-42 VDC	Chrome	White Tip	R8762*

* These units supplied without internal lighting.